



2022

ARTS EDUCATION

PRESCHOOL AND YEARS K – 12

PP&VA

ACKNOWLEDGEMENT OF TRADITIONAL OWNERS
Penrith Performing & Visual Arts acknowledges the unique status of Aboriginal and Torres Strait Islander people as the original owners and custodians of lands and waters, including the lands and waters of Western Sydney.

**CREATE.
ENGAGE.
LEARN.
SHARE.**

Photo by Tracey Schramm



EXPERIENCE THE ARTS AT PP&VA

The Joan
Q Theatre
Penrith Conservatorium
Penrith Regional Gallery

THE CREATIVE HEART OF PENRITH

Contents

KEY

EL

EARLY LEARNING /
PRESCHOOL

P

PRIMARY
EDUCATION

S

SECONDARY
EDUCATION

Make the Most of Your Students' Arts Education Journey	6
Access for School Groups	8

Events at The Joan

TERM 1	
● Amphibian	14
TERM 2	
● ● Beep	16
● Annual Youth Theatre Festival	18
TERM 4	
● ● Edward the Emu	20
SCHOOL HOLIDAY PERFORMANCES	
● ● Guess How Much I Love You	22
● The Box Show	24
CAREER PATHWAYS AND DEVELOPMENT FOR STUDENTS	
● ● Backstage Pass	26
● Work Experience and Placement	27
● ● Q Theatre	28
● Originate	30
● ● Penrith Conservatorium	32
● ● ● DIGITAL OFFERINGS	34



Events at Penrith Regional Gallery

● ● ● LEARNING AT THE GALLERY	36
● ● ● SCHOOL VISITS	38
● ● ● EXHIBITION HIGHLIGHTS	40
● ● ● EXHIBITION PROGRAMS	47
● ● ● DIGITAL OFFERINGS	48

Planning Your Excursion

Information for School Groups	50
How to Book	53
Booking Forms	55



Make the Most of Your Students' Arts Education Journey

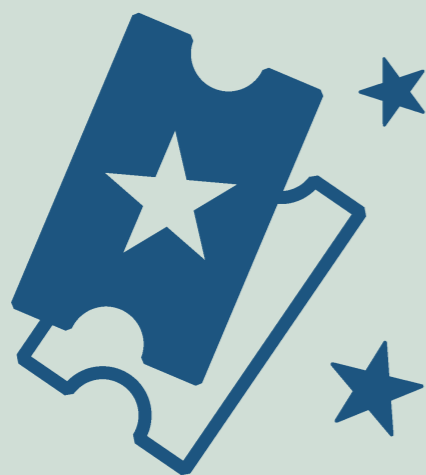
Enhance your students' arts experience and extend their learning in the classroom before and after our shows, exhibitions and events.

Carefully devised in collaboration by the production and education teams from the organising companies and Penrith Performing & Visual Arts, these resources help you connect your excursion to the syllabus, whilst providing a range of additional ideas and activities to enable your students to achieve a greater level of engagement with the content covered.

We also place high importance on providing experiences for students to further develop their practical skill levels and career pathways. Therefore, where possible, we offer opportunities for your students to work directly with practicing arts professionals.



The resources available for our offerings vary and are indicated in the coloured tab at the top of the right-hand page throughout this brochure, using the key outlined here.



BACKSTAGE PASS

Backstage Pass tours give your school group exclusive behind-the-scenes access to areas within the theatre not normally available to the public, increasing your students' understanding of how a professional theatre works. Tours at The Joan can be booked as an add-on to a show or a standalone activity and can be adapted to cater to your students. Backstage Pass tours are subject to capacity, availability and COVID Safety restrictions. Please refer to page 26 for more information.



Q&A SESSIONS

Q&A or In Conversation sessions allow school groups to gain a deeper understanding into the production, exhibition or event. Held after the performance with the cast and/or creative team, or with the artist or artists in conjunction with an exhibition, they give your students the unique chance to ask all their burning questions. This helps your group to further comprehend the content they have experienced and to adapt the ideas discussed into their own arts practice.



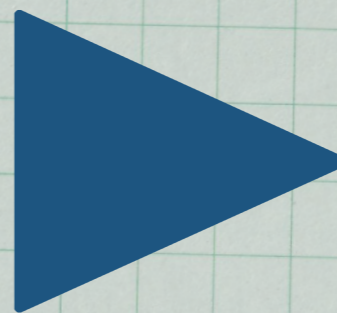
CURRICULUM LINKS

Curriculum links have been developed to connect your excursion with the NSW State Syllabus. These assist you in choosing a show, exhibition or event that links to your lesson plans and supports your students in meeting their learning outcomes.



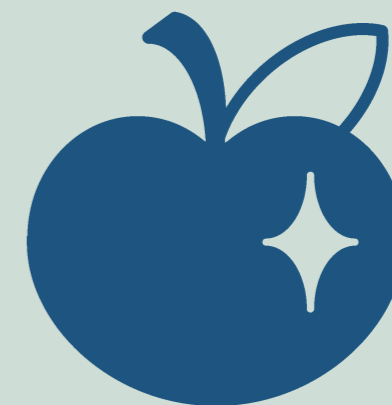
WORKSHOPS

In-person or digital workshops led by arts professionals and/or teaching artists may be offered pre- or post-excursion as an extra or a standalone activity. Our workshops aim to build confidence and inspire by giving your students key opportunities to explore, practice and adapt new skills and techniques and apply them to their arts practice inside and outside of the classroom.



ONLINE MEDIA RESOURCES

Media resources differ depending on the show, exhibition or event and may include videos, podcasts, image galleries and/or interactive web pages. They can provide students with further insight into the artists or cast and creative teams, as well as behind-the-scenes into the rehearsal process, curatorial decisions and development of the tour. You can access available media resources for each of our offerings from their individual event pages on The Joan and Penrith Regional Gallery's websites.



TEACHERS RESOURCE KITS AND STUDY GUIDES

Teachers Resource Kits are designed to assist you in devising pre- and post-excursion lesson plans and activities that link directly to the curriculum. Study Guides are created to help students engage with the work through access to focus questions and extra information around the production or exhibition. Where available, these resources can be downloaded from the web page for each event on The Joan or Penrith Regional Gallery's websites.

Access for School Groups

Penrith Performing & Visual Arts (PP&VA) is comprised of the Joan Sutherland Performing Arts Centre, Q Theatre, Penrith Conservatorium and Penrith Regional Gallery, Home of The Lewers Bequest and represents a diverse and dynamic blend of creative practice in the Western Sydney region.

At PP&VA, we are dedicated to creating inclusive, quality educational arts experiences for all students and teachers.

The events in our 2022 Arts Education Season will take place at The Joan and Penrith Regional Gallery.

THE JOAN

The Joan is located at 597 High Street, Penrith and is accessible by car, train, bus and walking.

THEATRES

This year, all productions at The Joan will take place in the Q Theatre.

The Q Theatre is an amphitheatre style auditorium with tiered seating and a thrust stage, which provides audiences with an intimate theatre experience. Seating 374 people, it is located on Level 1 of The Joan and is accessible via our lift or stairs. There is level access and accessible seating at the back of the theatre in row K.

Please advise if your group has any specific access requirements for seating on your booking form.

FOYER

Situated on the ground floor, our main foyer space, the Atrium Foyer, is within walking distance of the main entrances and exits of the venue, Box Office, accessible toilets and the lift. The foyer is the central meeting point for school groups following arrival, during a show interval/workshop break, or prior to leaving The Joan.



STREET AND BOX OFFICE ACCESS

The Joan has two main entrances along High Street:

- Opposite Westfield Penrith; and
- Opposite Penrith City Council's Civic Car Park.

Both entranceways have level access to the ground floor foyer, which includes Box Office, our lift and accessible toilets. Our Box Office is located inside the entrance opposite Westfield Penrith. Please be aware that our Box Office location will be moving in the middle of 2022.

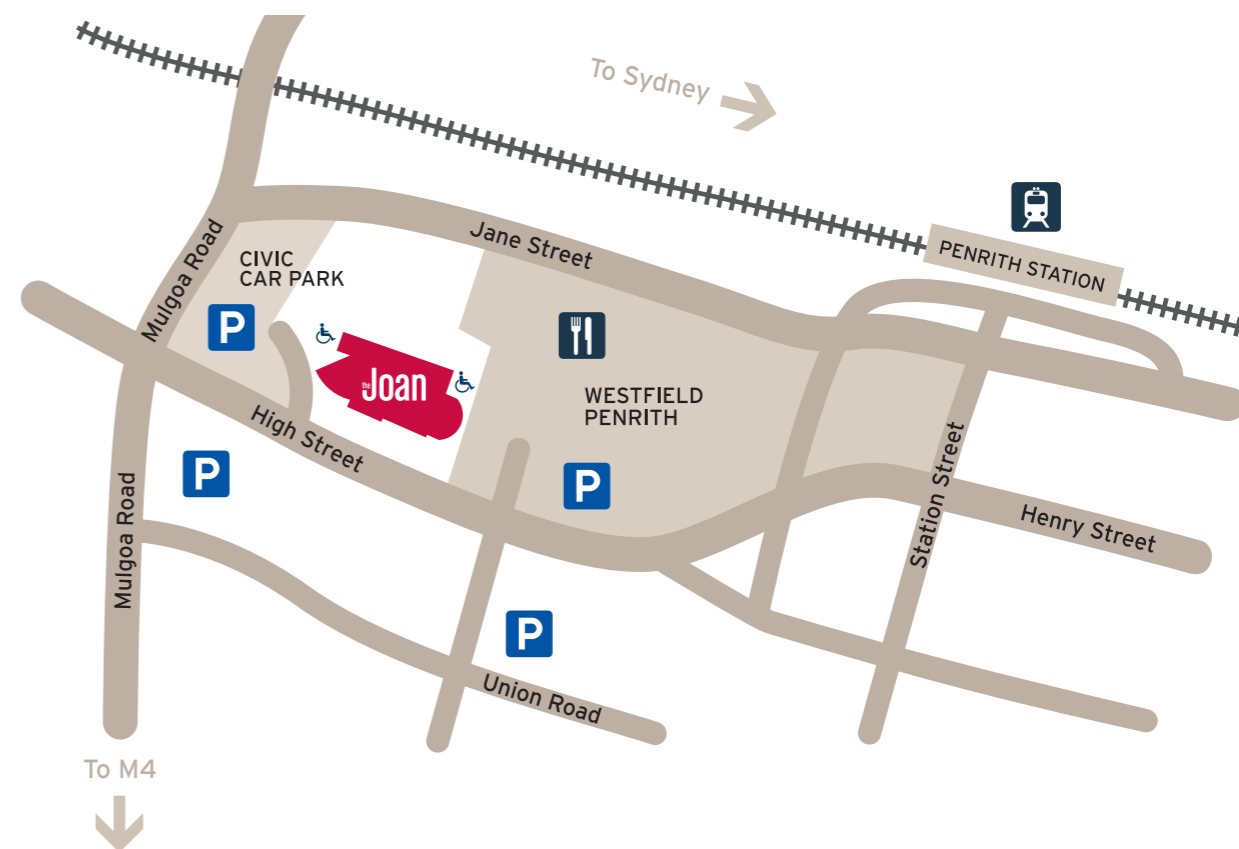
LIFTS

There is lift access to all levels of The Joan.

ACCESSIBLE TOILETS

Accessible toilets are located on:

- Ground Floor – Opposite the entrance to the lift; and
- Level Two – Opposite the Orchestral Room.



Getting Here

BY TRAIN

The Joan is a mostly flat walk from Penrith Station. Exit the station on the Westfield Penrith side. Cross the street and enter the shopping centre on your right. Continue through Westfield, turning left at the small food court and proceed straight ahead through the pedestrian crossing to the second section of Westfield. Exit Westfield at the automatic doors on your left at the large food court, ahead of Woolworths. The Joan is located across the grass on the right and has level access. Walking time will vary depending on the age and size of your group. We recommend allowing 15 minutes to get comfortably from the station to The Joan. For more details on getting to The Joan via train visit transportnsw.info

BY CAR OR BUS

Follow the M4 from either the east or west and turn off at the Mulgoa Road exit. Head north following the signs to Penrith's CBD. When you come to the major intersection at High Street and Mulgoa Road, turn right into High Street and then left at the roundabout.

PARKING AND BUS DROP OFF ZONES

Parking is available outdoors at Penrith City Council's Civic Place Car Park, opposite The Joan. Time limits apply and are indicated on the signs.

School buses can drop off and pick up your group in the designated area at Penrith City Council's Civic Place Car Park. Please note, there is no parking available for buses in this area. We recommend you advise the bus company or your school's bus driver of this in advance so they are prepared to find an alternate place to park after dropping you off, as well as organising a suitable time to pick you up.

Access to The Joan from the car park is level and wheelchair friendly.



PENRITH REGIONAL GALLERY

Penrith Regional Gallery is located at 86 River Road, Emu Plains and can be accessed by car, bus, train and walking.

GALLERIES AND WORKSHOP SPACES

All of our gallery and workshop spaces are level and accessible via ramps and walkways.

Penrith Regional Gallery has four gallery spaces including the:

- Main Gallery – This large space hosts major touring and in-house curated exhibitions;
- Anchor House – Showcases works from the Gallery's extensive Collection;
- Lounge Room Gallery – Connected to the Reception and Shop, this gallery is home to our annual program of community exhibitions, run in conjunction with special events such as NAIDOC Week and International Day for People with Disability;
- Lewers House – A converted Federation-style building primarily used for the presentation of new works by leading contemporary artists.

Our workshops are held in the Sonia Farley Studios. Both of these studios can be configured to meet the needs and requirements of your school group.

Please advise if your group has any specific access requirements on your booking form.

RECEPTION AND SHOP

Located close to the car park, our Reception and Shop are within walking distance of both of the main entrances and exits of the venue. This is the central point for teachers to check-in when your school group arrives.



Ramps and walkways provide access to all gallery and workshop spaces and viewing areas of the surrounding gardens. Please note, some areas of the heritage garden and car park have uneven and rough terrain.

STREET ACCESS

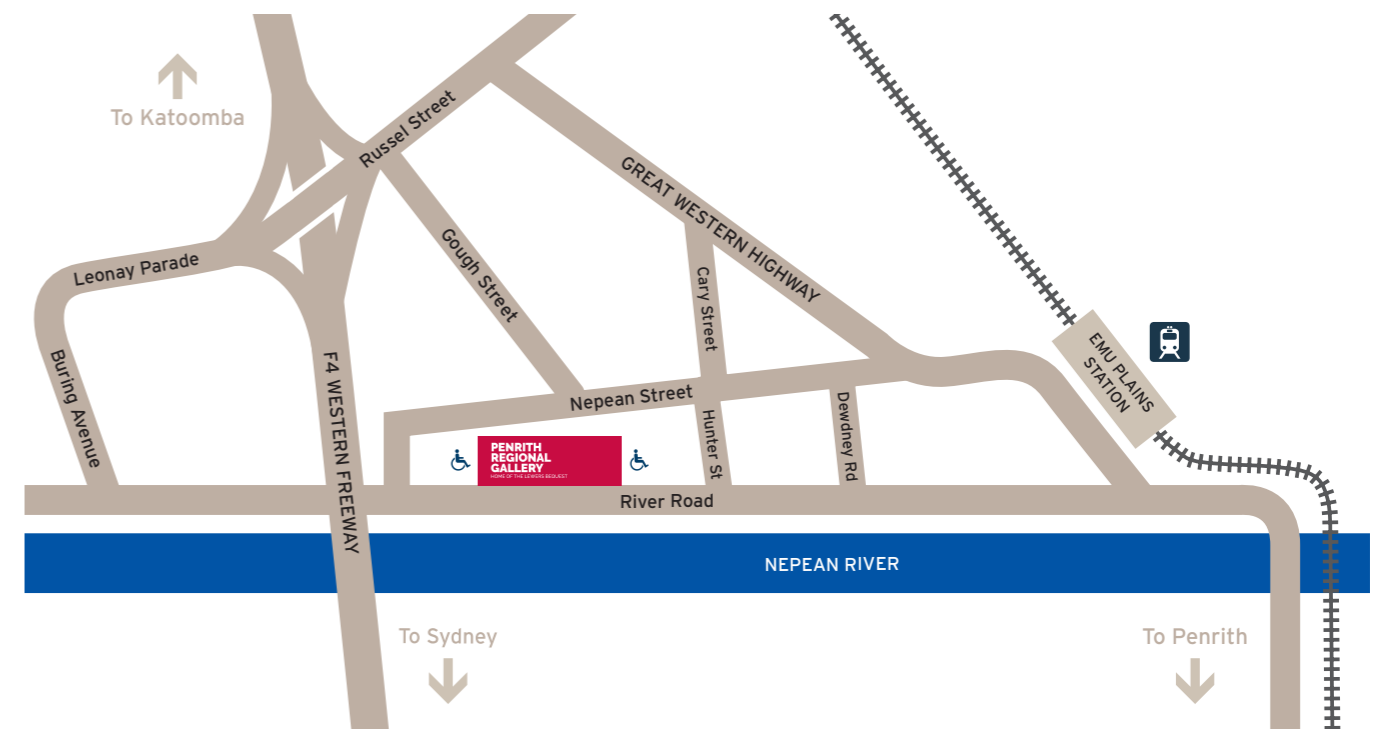
The Gallery has two main entrances:

- A paved ramp leading from River Road to the courtyard of the café, Cafe at Lewers; and
- The entrance from the car park.

Please be advised, the path along the front of the Gallery on River Road is not paved.

ACCESSIBLE TOILETS

An accessible toilet is located opposite the Main Gallery.



Getting Here

BY TRAIN

Penrith Regional Gallery is a mostly flat walk from Emu Plains Station. Exit the station on the Great Western Highway side and walk towards Old Bathurst Road. Cross the road at the corner and continue along the Great Western Highway, then turn left at Warring Avenue. When you reach River Road, turn right and keep walking straight ahead. You will find Penrith Regional Gallery on your right. Walking time will vary depending on the age and size of your group. We recommend allowing 30 minutes for walking. For more details on getting to the Gallery via train visit transportnsw.info

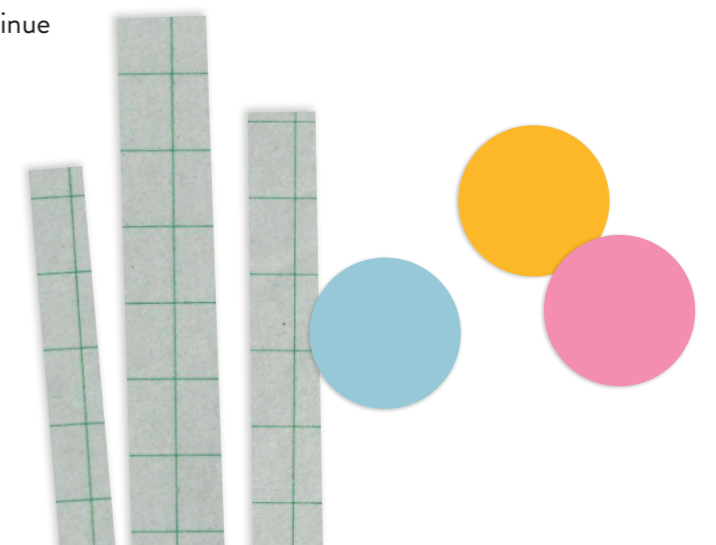
BY CAR OR BUS

Follow the M4 to Leonay Parade. Take the A44 exit at Russell Street, Emu Plains. At the roundabout take the first exit onto Leonay Parade. Turn left onto Buring Avenue, then left on River Road and continue to the Gallery.

PARKING AND BUS DROP OFF ZONES

Limited outdoor parking is available onsite and can be accessed via the driveway located on River Road at the southern corner of the site. This includes two accessible parking spaces. Alternatively, street parking is available along River Road. Time limits may apply.

School buses can drop off and collect your group at the main entry to the Gallery (near the black and white Gallery sign) on River Road. Please note, there is no parking available for buses in the onsite carpark. We recommend that you advise the bus company or your school's bus driver that they will need to find a place to park along River Road and organise a time for them to pick you up in advance.



SPECIFIC NEEDS AT OUR VENUES



AUSLAN INTERPRETED EVENTS

Australian Sign Language (Auslan) interpreting is provided for select guided exhibition tours and Q&A events. This enables Deaf Auslan users to engage with the event using their first language.



RELAXED EVENTS

Relaxed performances, screenings or events are designed to reduce anxiety and create a supportive atmosphere for patrons with autism spectrum conditions, learning disability and other sensory and communication needs. There is a relaxed attitude to regular event etiquette, such as noise and movement among the audience.

Modifications will differ depending on the event, but can include:

- The doors to the theatre, gallery or venue space being left open to allow audience members to enter and exit as needed; and
- Noise and movement and light and sound effects being toned down or removed.

Where possible, a Visual Story and/or Sensory Guide is provided prior to a Relaxed Event to further assist teachers and students in preparing for their excursion.



VISUAL STORIES

Using both words and pictures, a Visual Story introduces students to what they can expect during their excursion to the theatre or gallery. They briefly tell the story of your journey from the start to the end of the event in a factual way, offering positive options to help with fears and triggers such as loud noises.



SENSORY GUIDES

A Sensory Guide provides teachers and students with a breakdown of sensory triggers throughout the event and when to expect them. These may include audience participation and interaction, changes in lighting and sound or specials effects such as haze.

OTHER REQUESTS

Upon request we may be able to provide accessible services other than those listed to help make your school groups visit more comfortable. Please let us know of any request you have on your booking form and we will do our best to arrange it.

For events at The Joan

E boxoffice@penrith.city

(Please copy in creativelearning@penrith.city)

P 02 4723 7600

For events at Penrith Regional Gallery

E gallery@penrith.city

P 02 4735 1100



“A whole-heartedly entertaining and humanising experience.”

GLAM ADELAIDE

NSW State Curriculum Links

	SUBJECT	CONTENT	OUTCOMES
STAGE 4	English	Appreciating and Identifying the Diverse Ways Texts Can Represent Personal and Public Worlds, Cultural Assumptions and their Effects on Meaning	EN4-1A, EN4-2A, EN4-3B, EN4-4B, EN4-5C, EN4-6C, EN4-7D, EN4-8D, EN4-9E
	Drama	Appreciating and Identifying Elements of Drama, Dramatic Forms, Performance Styles, Techniques and Conventions	4.3.1, 4.3.2, 4.3.3
	PDHPE	Appreciating and Identifying an Understanding of Strategies and Contextual Factors that Promote a Sense of Health, Wellbeing, Personal Identity and Resilience, and Respectful Relationships	PD4-1, PD4-2, PD4-3, PD4-6, PD4-7, PD4-8
STAGE 5	English	Understanding and Evaluating the Diverse and Complex Ways Texts Can Represent Personal and Public Worlds, Cultural Assumptions and their Effects on Meaning	EN5-1A, EN5-2A, EN5-3B, EN5-4B, EN5-5C, EN5-7D, EN5-8D, EN5-9E
	Drama	Understanding and Evaluating Complex Elements of Drama, Dramatic Forms, Performance Styles, Techniques and Conventions	5.3.1, 5.3.2, 5.3.3
	PDHPE	Understanding and Evaluating Complex Strategies and Contextual Factors that Promote a Sense of Health, Wellbeing, Personal Identity and Resilience, and Respectful Relationships	PD5-1, PD5-2, PD5-3, PD5-6, PD5-7, PD5-8

For Stage 6 curriculum links, full curriculum information and to book, visit the *Amphibian* web page at thejoan.com.au/education

A Windmill Theatre Company Production

AMPHIBIAN

By Duncan Graham

Based on the real-life testimonies of refugees, *Amphibian* sees past, present and dreams collide in an epic story of displacement, loss and adapting to different worlds.

Chloe and Hassan are sent out of class under suspicion for stealing money while feeding the class axolotl. As the unlikely pair work out who's responsible, Chloe hears the heartbreaking story of an Afghan boy who has travelled alone, across land and sea, for a better life.

Poignant, powerful and bubbling with humour, *Amphibian* is a sparkling teen drama that brings one of the most urgent issues of our time roaring onto the stage.

CREATIVE TEAM

PLAYWRIGHT Duncan Graham

DIRECTOR Sasha Zahra

DESIGNER Meg Wilson

COMPOSER AND SOUND DESIGNER Ian Moorhead

LIGHTING AND AUDIO VISUAL DESIGNER Mark Pennington

CULTURAL CONSULTANTS Muzafar Ali and Elyas Alavi

CAST

Rami Saaid

Julia Vosnakis

Photo by Shane Reid. Art Direction by Carnival Studio



Amphibian has been assisted by the Australian Government through the Australia Council for the Arts, its arts funding and advisory body.



Suitable for Years 7 – 12



Term 1

DATES & TIMES

Friday 25 February at 10am & 12pm

Saturday 26 February at 10am & 12pm

DURATION

55 minutes (No interval plus 15-minute Q&A following the 12pm weekday performance)

PRICE

\$20 per student and additional teachers (1 free teacher per 10 students)

AUDIENCE INFORMATION

This production contains coarse language, adult themes and the use of theatrical haze.

ACCESS THE FREE DIGITAL PLATFORM

Deepen your students' theatrical experience with Windmill's interactive and immersive digital platform, *Across Land & Sea*. Available to access via the show page on our website, this platform brings the true story that inspired *Amphibian* to life through illustration, documentary interviews and animation and allows your students to examine the real effects of the journey refugees face with empathy and nuance.

“A colourful setting, comic puppets and plenty of surprises hold young audience members in thrall.” *InDaily*

CREATIVE TEAM

DIRECTOR AND CO-CREATOR Sam Haren
 DESIGNER AND CO-CREATOR Jonathon Oxlade
 WRITER AND CO-CREATOR Katherine Fyffe
 TECHNICAL DESIGNER Chris Petridis
 COMPOSER AND SOUND DESIGNER Luke Smiles
 PUPPET MAKER AND CONSULTANT Tamara Rewse
 PUPPET MAKER Marshall Tearle

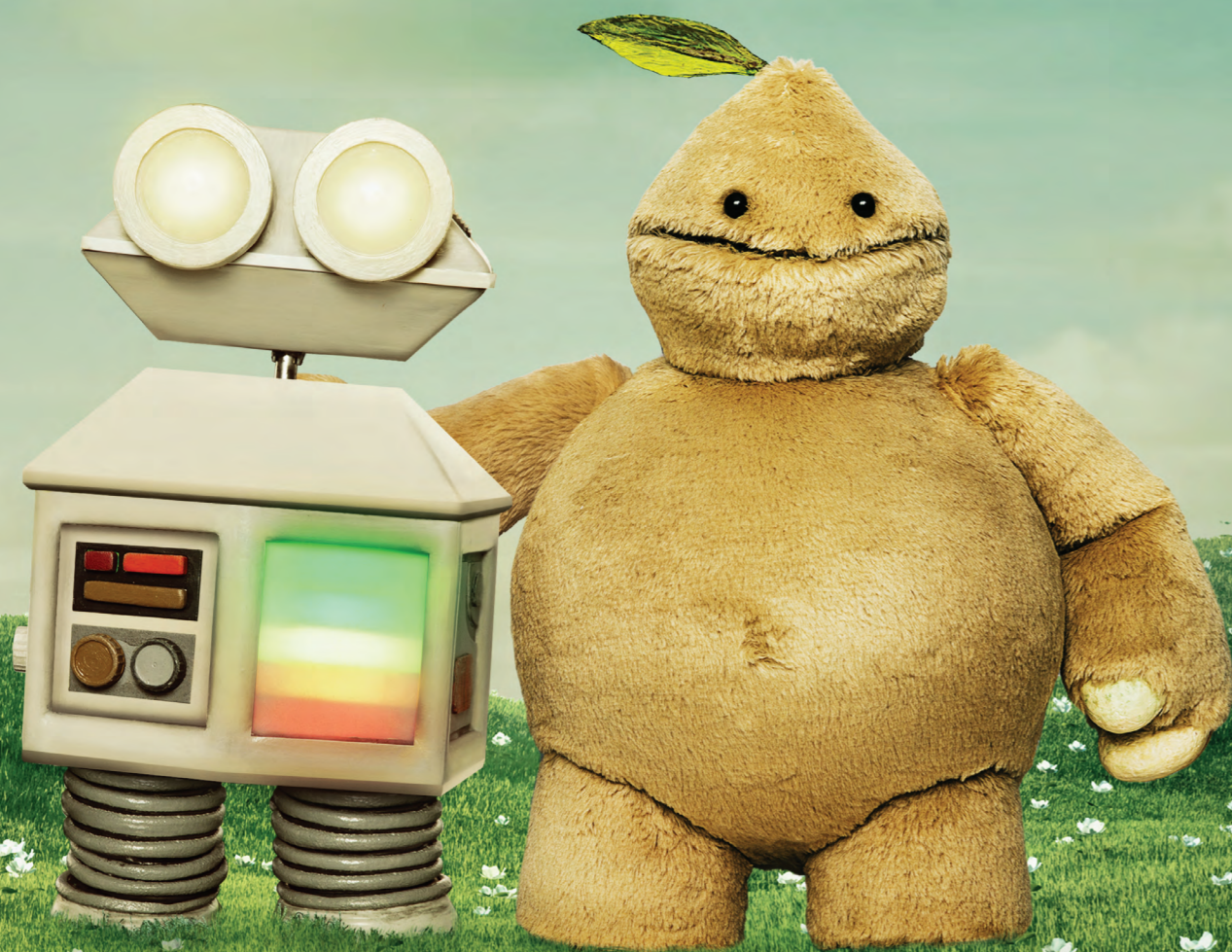


Photo by Shane Reid. Design by Carnival Studio

A Windmill Theatre Company Production

BEEP



Suitable for Preschool – Year 2



Term 2

DATES & TIMES

Friday 6 May at 10am (Relaxed Performance) & 12pm
 Saturday 7 May 10am & 12pm

DURATION

35 minutes (No interval)

PRICE

\$20 per student and additional teachers (1 free teacher per 10 students)

AUDIENCE INFORMATION

This production contains the use of strobe lighting, theatrical haze and smoke effects.

The award-winning team behind *Grug and the Rainbow* return with this interactive, charming tale of unexpected friendship, finding your place in the world and learning to mix things up a little bit.

In Mort’s village everything has its place, every day is the same and everyone likes it that way. Mort is content living in a tree that produces molly melons for him to eat when it rains and playing with fluffy yellow balls called ‘fuzzles’. Until, one morning, Beep the robot lands in town – ‘Crash! Boom! Bang!’

Who is this noisy stranger that has interrupted Mort’s breakfast molly melon? How will Beep find her way home?

Featuring Windmill’s trademark design, gentle storytelling, music and puppetry, *Beep* is a beautiful introduction to theatre, guaranteed to spark the imaginations of young audiences.



NSW State Curriculum Links

	SUBJECT	CONTENT	OUTCOMES
EARLY STAGE 1	English	Text Type: Drama, Spoken Texts. Storytelling	ENe-6B, ENe-8B, ENe-10C, ENe-11D
	Drama	Drama Forms: Puppetry, Storytelling	DRAES1.4
STAGE 1	English	Text Type: Drama, Spoken Texts. Storytelling	EN1-4A, EN1-6B, EN1-8B, EN1-10C, EN1-11D
	Drama	Drama Forms: Puppetry, Storytelling	DRAS1.4

For full curriculum information and to book, visit the *Beep* web page at thejoan.com.au/education



Windmill Theatre Co is supported by the Government of South Australia and the Australian Government through the Australia Council for the Arts, its arts funding and advisory body.

Creators

Don't miss this wonderful chance to develop your performing arts skills, immerse yourself in different theatrical styles and work with leading industry professionals including writers, directors, actors and technicians, as you create an original 10-minute performance for presentation on the Q Theatre stage.

APPLICATIONS OPEN FRIDAY 28 JANUARY

DATES AND TIMES

Applications Close:

Friday 11 February at 5pm

Schools Confirmed/Registrations

Open: Monday 14 February

Registrations Close:

Friday 4 March at 5pm

Registration Payment Due By:

Friday 1 April at 5pm

Stagecraft Workshops:

Tuesday 26 – Thursday 28 April

Technical Rehearsals:

Monday 6 – Wednesday 8 June

Performances:

Thursday 9 June at 12pm & 7:30pm

Q Theatre presents

ANNUAL YOUTH THEATRE FESTIVAL 2022

The *Annual Youth Theatre Festival (AYTF)* returns in 2022! A key theatre event for local schools, AYTF celebrates learning and professional theatre-making, while providing students with invaluable opportunities to express their voices through various aspects of performing arts production. Previous AYTF productions have included *Split*, *Mother*, *Decoded* and *The Tower*.

As part of the festival, a maximum of eight secondary school groups come together to respond to a provocation, from which they select a performance style and create a 10-minute performance. Over a six-week period, student groups are paired with a professional theatre artist to direct and guide the performance development, rehearsal and finale, which will be performed on Q Theatre's professional stage in front of an audience.

For over 25 years, Q Theatre has invited students to gain direct experience working in a professional theatre-making environment and providing pathways for many into theatre careers in Penrith, greater Western Sydney and beyond. AYTF continues this long-running tradition.

NSW State Curriculum Links

	SUBJECT	CONTENT	OUTCOMES
STAGE 5	English	Sophisticated Understanding, Analysis and Communication of Texts, their Purposes and Contexts	EN5-1A, EN5-3B, EN5-4B, EN5-5C
	Drama	For Creators: Elements of Drama, Playbuilding, Dramatic Form/Performance Style	5.3.1, 5.3.2, 5.3.3
		Styles, Structures and Techniques of Performance	5.3.3
STAGE 6	English	Representations of Personal and Public Worlds. Cultural Assumptions and their Effects on Meaning	EN11-7, EN11-8, EN12.7, EN12.8
	Drama	For Creators: Skilful Use of Collaboration, Production and Performance to Communicate Meaning, with an Audience. Social Contribution of Drama	P1.1, P1.2, P1.4, P1.5, P1.6, P1.7, P1.8, P2.1, P2.2, P2.3, P2.4, P2.5, P2.6, P3.2, P3.4, H1.1, H1.2, H1.3, H1.4, H1.7, H1.8, H1.9, H2.1, H2.2, H2.4, H2.5, H3.3, H3.4, H3.5
		Performance Making Styles, Structures and Techniques. Social Contribution of Drama	P3.1, P3.2, P3.3, P3.4, H3.1, H3.2, H3.3, H3.4, H3.5

For full curriculum information and to book, visit the *Annual Youth Theatre Festival* web page at thejoan.com.au/education



Suitable for Years 9 – 12 and
VET Entertainment Students



Term 2

DATES & TIMES

Thursday 9 June at 12pm & 7:30pm

DURATION

120 minutes (Including
20-minute interval)

PRICE

School Groups: \$20 per student and additional teachers (1 free teacher per 10 students)

General Public: Standard Ticket \$25, Concession \$20, Family of 4 \$80

AUDIENCE INFORMATION

This production may contain strong language and strobe lighting effects.

Audience Members

Gain first-hand insight into different theatrical styles and support peers from your school and schools throughout the region as they present their final work live on stage. AYTF sparks students' creativity and discussion points in the classroom around the themes and ideas presented.



NSW State Curriculum Links

	SUBJECT	CONTENT	OUTCOMES
EARLY STAGE 1 AND STAGE 1	English	Texts which are widely regarded as quality literature. A widely defined Australian literature. Text Type: Drama Scripts, Picture Books, Spoken Texts	ENe-6B, ENe8B, ENe-10C, ENe-11D, EN1-4A, EN1-6B, EN1-8B, EN1-10C, EN1-11D
	Drama	Drama Forms: Storytelling, Movement, Puppetry and Playbuilding	DRAES1.1, DRAES1.3, DRAES1.4, DRAS1.2, DRAS1.3, DRAS1.4
	Visual Arts	Develop knowledge and understanding, skills, values and attitudes in making by engaging in the art, craft and design	VAES1.1, VAS1.1
	Science	Explores scientific concepts and develop knowledge and understanding of the Living World	STe-3LW-ST, ST1-4LW-S
	PDHPE	Develop the knowledge, understanding, skills, values and attitudes required to lead and promote healthy, safe and active lives	PDe-4, PDe-10, PDe-11, PD1-4, PD1-10, PD1-11
STAGE 2	English	Texts which are widely regarded as quality literature. A widely defined Australian literature. Text Type: Drama Scripts, Picture Books, Spoken Texts	EN2-4A, EN2-6B, EN2-8B, EN2-10C, EN2-11D
	Drama	Drama Forms: Storytelling, Movement, Puppetry and Playbuilding	DRAS2.1, DRAS2.2, DRAS2.4
	Visual Arts	Develop knowledge and understanding, skills, values and attitudes in making by engaging in the art, craft and design	VAS2.1
	Science	Explores scientific concepts and develop knowledge and understanding of the Living World	ST2-4LW-S
	PDHPE	Develop the knowledge, understanding, skills, values and attitudes required to lead and promote healthy, safe and active lives	PD2-4, PD2-10, PD2-11

For full curriculum information and to book, visit the *Edward the Emu* web page at thejoan.com.au/education

A Monkey Baa Theatre Company Production

EDWARD THE EMU

Based on the books by Sheena Knowles and Rod Clement
Written for the stage and directed by Eva Di Cesare

The award-winning team behind *Possum Magic* return to bring a unique imagining of two beloved Australian picture books, *Edward the Emu* and *Edwina the Emu*, to life on stage in a heartfelt, clever and funny new tale.

Edward is bored with the lot he lives on. Being the only emu at the zoo leaves him feeling glum and under the impression that the grass is greener in another animal’s enclosure. Convinced that the other creatures are more popular, Edward breaks ranks in search of fun and finds Edwina along the way!

Come on an adventure with the emus as they hilariously navigate their own feathered existential crises, seeking to find their place in the world. Meanwhile, the zoo keepers are in hot pursuit to restore order to the zoo.

Featuring exceptional, world-class puppetry, an original score and inventive storytelling, the emus’ journey of hijinks and tenderness leads them to discover that the best thing you can be is...you!

CREATIVE TEAM
WRITER AND DIRECTOR Eva Di Cesare
SET AND COSTUME DESIGNER Isabel Hudson
PUPPETRY DIRECTOR Alice Osborne
COMPOSER AND SOUND DESIGNER Nate Edmondson
LIGHTING DESIGNER Matt Cox
DRAMATURG Sandra Eldridge
ASSISTANT DIRECTOR Warwick Doddrell
PUPPETRY DESIGNER AND MAKER Bryony Anderson

Illustration by Rod Clement



Suitable for Preschool – Year 4



Term 4

DATES & TIMES

Tuesday 22 November at 12pm & 6pm
Wednesday 23 November at 10am (Relaxed Performance) & 12pm

DURATION

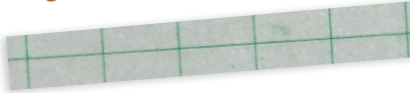
50 minutes (No interval plus 20-minute Q&A following all performances)

PRICE

\$20 per student and additional teachers (1 free teacher per 10 students)

FREE WORKSHOPS

Free In-School Workshops run by Monkey Baa are available by request prior to the performance season. Hurry – these are limited to the first two schools who book tickets to *Edward the Emu* and express interest in the workshops on their booking form!



**CREATIVE TEAM**

DIRECTOR Liesel Badorrek
DESIGNER Isla Shaw
PLAYWRIGHT Richard Tulloch
LIGHTING DESIGNER Benjamin Brockman
SOUND DESIGNER Gail Priest

NSW State Curriculum links are available for Vacation Care and Home School Groups to download from thejoan.com.au/education

Guess How Much I Love You™ and © Sam McBratney and Anita Jeram 2021. Licensed by Walker Books Ltd. Guess How Much I Love You is a registered trademark of Walker Books Ltd, London UK

CDP Kids presents

GUESS HOW MUCH I LOVE YOU

A play by Richard Tulloch
 Adapted from the books by Sam McBratney and Anita Jeram

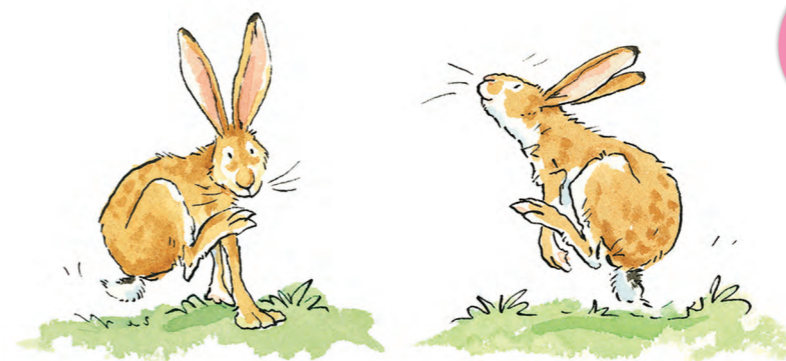
"I love you right up to the moon – and back."

Join the enchanting adventure of Little and Big Nutbrown Hare these Easter School Holidays as they discover the magic and colour of the seasons in a dazzling new adaptation of Sam McBratney's timeless children's books.

This playful story of love and nature unfolds on stage in an exciting show jam-packed full of exquisite puppetry and music.

Brought to life by the team behind the Australian tours of *The Gruffalo*, *The Very Hungry Caterpillar* and *Spot*, this all-time favourite will excite, educate and entertain new readers and first-time theatre goers.

A must-see for fans of the book, hop to it and book your tickets now to avoid missing out!



GUESS HOW MUCH I LOVE YOU

cdpKids

Australian Government
RISE Fund

NSW
GOVERNMENT

Restart Investment to Sustain and Expand (RISE) Fund – an Australian Government initiative. This project is supported by the NSW Government through Create NSW.

EL P

Suitable for Ages 3+
and their Supervisors



Autumn School Holidays

DATES & TIMES

Wednesday 13 April at 12pm
 (Relaxed Performance) & 2pm
 Thursday 14 April at 10am
 (Relaxed Performance) & 12pm

DURATION

55 minutes (No interval plus
 15-minute Q&A following the 12pm
 performance on Thursday)

PRICE

**Childcare, OOSH, Vacation Care
 and Home School Groups:** \$20
 per child and additional supervisors
 (1 free supervisor per 10 children)
General Public: Standard Ticket \$25,
 Family of 4 \$90

FREE WORKSHOP

A free, interactive digital workshop will be available for groups who purchase tickets to *Guess How Much I Love You*, following the performance season. Stay tuned – Full details will be communicated via email closer to the date!



CREATIVE TEAM
 CREATOR AND CO-WRITER Oded Prior
 DIRECTOR AND CO-WRITER Nigel Turner-Carroll

Junkyard Beats and Critical Stages Touring presents

THE BOX SHOW

Created by Oded Prior

In the hands of Junkyard Beats, ordinary household items are transformed into extraordinary musical instruments and unwanted junk comes alive in exciting and surprising ways!

The Box Show excites the imagination of children and adults alike. Follow four characters during their daily activities in a world made of cardboard boxes and junk. The contents of an abandoned kitchen and wheelie bins become the greatest drum set in the world; plastic bags are an amazing musical instrument and the human body becomes a unique sound machine.

Tag along for a day in the life of a bunch of musical misfits as they reinvigorate the junk that the world has forgotten.

Learn about sustainability with this high energy, imaginative and interactive performance combining drumming, dance, theatre and comedy. With a language of gibberish and rhythm, this show is accessible to any age and nationality.



JUNKYARD ORCHESTRA WORKSHOP

Suitable for Ages 5 – 12

See the show, then join the team from Junkyard Beats for their award-winning workshop to learn basic body percussion skills and how to turn recycled materials such as buckets, PVC pipes, broomsticks, plastic bins and drums into musical instruments, so you can create your own Junkyard Orchestra. Limited places available – Book early to avoid the disappointment of missing out!

Photo by Boaz Nothman



NSW State Curriculum links are available for Vacation Care and Home School Groups to download from thejoan.com.au/education



Suitable for Ages 5 – 12
and their Supervisors



Winter School Holidays

DATES & TIMES

Shows

Friday 8 July at 10am & 1pm

Saturday 9 July at 10am & 1pm

Workshops

Friday 8 July at 2:30pm

Saturday 9 July at 2:30pm

DURATION

Show

60 minutes (No interval plus 15-minute Q&A following 10am performances)

Workshop

45 minutes (No break)

PRICE

SHOW AND WORKSHOP PACKAGE

Child \$35

SHOW ONLY

Childcare, OOSH, Vacation Care and Home School Groups: \$20

per child and additional supervisors (1 free supervisor per 10 children)

General Public: Standard Ticket \$25, Family of 4 \$90

Please Note: Supervisors and parents of children participating in the workshop are welcome to stay and watch, but must book a free workshop ticket when booking for the show.

AUDIENCE INFORMATION

This production contains loud noises and music.

Career Pathways and Development for Students

BACKSTAGE PASS

Share the magic of theatre with our immersive *Backstage Pass* tours.

Backstage Pass is the perfect way to give your students a greater understanding of how a professional theatre works and an exclusive, behind-the-scenes look into theatre and music production.

Available as an add-on to a show or a standalone activity, each tour is unique and can be tailored to meet your school group's learning outcomes and needs.

PRIMARY SCHOOL STUDENTS

Kindergarten – Year 6 (Early Stage 1 – Stage 3)

These tours are ideal as an add-on activity for schools attending a show or workshop. They usually run for 30 – 45 minutes and are designed to provide an overview and develop your students' appreciation of the theatre and how it runs.

JUNIOR SECONDARY SCHOOL STUDENTS

Years 7 – 10 (Stages 4 – 5)

Running for 1 – 2 hours, tours for this stage work well as an add-on to a show or a standalone activity. They provide students with an overview to the theatre and explore details around lighting and sound, stage mechanics, theatre roles and event management.

SENIOR SECONDARY STUDENTS

Years 11 – 12 (Stage 6)

Ideal for students studying Drama or VET Entertainment, we recommend a half or full day tour with a focus on specific areas. These tours delve further into the complexities of lighting and sound, stage mechanics and more.



Suitable for
Kindergarten – Year 12 and
VET Entertainment Students

DATES & TIMES

Please outline your preferred dates and times on your booking form. **Please Note: *Backstage Pass* tours are subject to capacity, availability and COVID Safety restrictions.**

PRICE

\$10 per student, per hour. We require full payment for your school group a minimum of 30 days prior to your *Backstage Pass* tour.

MORE INFORMATION & ENQUIRIES

Ian Zammit, Theatre Programs Coordinator
E creativelearning@penrith.city
T 02 4723 7606

S

Suitable for Year 10 and
VET Entertainment Students

WORK EXPERIENCE AND PLACEMENT

Are you young and passionate about pursuing a career in the performing arts? Get a taste for the arts industry and gain key practical experience with Penrith Performing & Visual Arts' (PP&VA) Work Experience and Work Placement programs at The Joan.

Both programs aim to foster the next generation of arts industry professionals by giving students a behind-the-scenes insight into the workings of an arts organisation. During their placement, students will have the opportunity to work alongside our team of experienced arts professionals from a range of different areas including creative, production and technical.

WORK EXPERIENCE is available for Year 10 students. Successful applicants complete a standard work week onsite during school term. This program gives students an introduction into the nature and workings of a professional arts environment, allowing them to link and implement classroom learning to real life situations in the arts industry. Many students find Work Experience assists them in choosing their elective subjects for their Senior School years.

WORK PLACEMENT is available for Vocational Educational Training (VET) students. Hours are flexible and tailored to the individual student's workplace suitability. This block placement enables the student to gain a more thorough understanding of PP&VA's inner workings and further extend their skills through exclusive opportunities. For instance, helping the team backstage prepare for a show.



These initiatives are a fantastic way to discover the practicalities of the workplace, attain valuable life skills, develop arts skills and deepen your love of the creative and performing arts.

Experiences will vary for students depending on which team they are working with and what is happening at The Joan while they are there.

INTERESTED IN APPLYING?

Students are encouraged to contact their School Careers Adviser. More information and application forms are available from thejoan.com.au/education

Applications are assessed on a case-by-case basis and youth of all abilities, cultural and socio-economic backgrounds are encouraged to apply.

Please Note: With the current COVID Safety restrictions and reduced programming booked for The Joan, there are no Work Experience or Work Placement offers planned at this stage for Terms 1 – 2. If restrictions are lifted and opportunities arise, we may be in a position to announce Work Experience and Placement offers later in the year. We hope for a change soon so we can welcome students back to The Joan. Keep an eye on thejoan.com.au/education for the latest news.

Studio Q Theatre and Performance Training Classes

Delve into the performing arts, learn and develop theatrical skills and gain experience performing on stage with Studio Q's renowned Theatre and Performance Training Program.

Led by professional teaching artists, Studio Q gives young and emerging artists of various ages, skill levels and abilities, the opportunity to start out, step up, ignite, accelerate and access their creative voice, whilst working towards a performance outcome.

Run by Q Theatre at The Joan, classes are delivered across an 8-week term, aligned with the NSW public school terms.

In the event that COVID Safety protocols prevent Studio Q classes from taking place onsite at any point during 2022, we will adapt our classes to an online environment. Stay tuned for the latest information on our website closer to the term dates.

MORE INFORMATION
qtheatre.com.au/learning

ENQUIRIES
Ian Zammit, Theatre Programs Coordinator
E creativelearning@penrith.city T 02 4723 7606



CREATIVE KIDS VOUCHER
Creative Kids Vouchers are accepted for all Studio Q courses.
Redeem your voucher by visiting or calling the Box Office on 02 4723 7600.



STARTING OUT
FOR AGES 5 – 8



STEPPING UP
FOR AGES 9 – 12



IGNITE
FOR AGES 13 – 15



ACCELERATE
FOR AGES 16 – 18
This course is the perfect complement to HSC Drama studies and a valuable tool in tertiary performance training preparation.



ACCESS ENSEMBLE
FOR AGES 18+
LIVING WITH DISABILITY

Photos by Phyllis Wong and Teniola Komolafe

2022 FEES

COURSE	COST PER TERM	COST PER SEMESTER
Starting Out and Stepping Up	\$204 per student	\$320 per student
Ignite and Accelerate	\$304 per student	\$520 per student
Access Ensemble	\$184 per student	\$320 per student

**ENROL PER SEMESTER
AND RECEIVE A DISCOUNT!**



P

S

Suitable for Ages 5 – 18+



Mouth of the River (Originate 2019). Photo by Emela Ugavule

A Q Theatre Production

ORIGINATE

Are you looking to apply your artistic talents, take the next step and pursue a career in the performing arts after High School? Don't miss your opportunity to join us for *Originate*, Q Theatre's annual young artists' production project.

Now in its eighth year, *Originate* offers a platform for an ensemble of young and emerging artists aged 18 – 26 to collaborate on the development of a new work about the here and now.

Guided by a practicing theatre director, the group collectively moves through a workshop process to develop their skills, exchange ideas and generate a new performance from the ground up, culminating in a season performed at The Joan.

This project focuses on the development of contemporary performance making practice in young artists and the fostering of new and unexpected collaborations. Previous years have presented *Our House*, *The Big Blue*, *Push Me Away/Pull Me Closer*, *How to Make a happy meal*, *Mouth of the River*, *The Bacchae*, and *Leda and The Swan*.

Artists who have participated in the *Originate* project have often gone on to take part in other projects with Q Theatre such as Q Theatre Lab and as teaching artists for Studio Q.

S

Suitable for Years 9 – 12 and
VET Entertainment Students



Stay Tuned –
More details announced soon!
Check thejoan.com.au/education
for the latest updates.

Penrith Conservatorium Music Training Courses



Ignite a lifelong passion for music with Music Training Programs at Penrith Conservatorium, Western Sydney's heart of music education.

Whether you're learning for leisure, or are determined to become the next musical prodigy, our professional teachers will help you develop your practical and theoretical music skills and achieve your goals.

Lessons, which run during school term times cover all musical genres, from classical to contemporary and musical theatre.

Throughout the year, we also offer our students a range of extra opportunities where possible. These may include live performances, behind-the-scenes experiences, and access to special ticket discounts.

In the event that COVID-19 restrictions prevent Penrith Conservatorium classes from taking place onsite at any point during 2022, we will adapt our classes to an online environment where possible. Stay tuned for the latest information on our website closer to the term dates.

PRIVATE LESSONS

Penrith Conservatorium offers private lessons for students of all ages, skill levels and abilities in the following instruments:

- **VOCAL AND KEYBOARD**
Singing or Piano Lessons;
- **PERCUSSION INSTRUMENTS**
Drum or Percussion Lessons;
- **STRING INSTRUMENTS**
Guitar, Cello, Viola or Violin Lessons;
- **WOODWIND INSTRUMENTS**
Clarinet, Flute or Saxophone Lessons; and
- **OTHER**
Speech and Drama Lessons or Performance Enhancement and Anxiety Management Sessions.

Our experienced music teachers are qualified to prepare all students in AMEB and/or HSC examinations.

GROUP LESSONS

Test drive an instrument with our affordable group classes! Pick up the rudiments of music before trying private lessons. Classes currently available include:

EARLY LEARNING MUSIC CLASSES

- *La La Lambs* for Ages 1.5 – 3;
- *Funky Monkeys* for Ages 3 – 5; and
- *Big Fish* for Ages 4 – 6.

GROUP KEYBOARD LESSONS

- For Young Beginners Ages 5 – 8 (Kindergarten – Year 2)

GROUP VIOLIN LESSONS

- For Young Beginners Ages 5 – 8 (Kindergarten – Year 2)

Photo by Fiona Sacco and Claire Bernoth



Suitable for Ages 1.5 – 18+

ENSEMBLE PROGRAMS

CHAMBER MUSIC ENSEMBLE

Take your musical skills to the next level with our Chamber Music Ensemble groups.

Meeting and rehearsing on Friday afternoons, students are assigned into groups ranging from duos to small bands, based on their instrument, musical ability and music genre. A tutor moves between groups providing each with support and musical guidance.

Small showcase events are available at the end of each term, with ensembles displaying excellence being invited to perform at the Annual Conservatorium Concert.

VOCAL ENSEMBLE

- *Junior Vocal Ensemble* for Ages 11 – 16; and
- *Senior Vocal Ensemble* for Ages 16 – 22.

PENRITH STRINGS:

JUNIOR STRING ENSEMBLE

Gain experience being part of a musical group, improve your confidence and enhance your solo skills with this ensemble program for students of violin, viola, cello and double bass. A fantastic forerunner to Penrith Youth Orchestra.

PENRITH YOUTH ORCHESTRA

Build your ensemble skills in a dynamic and supportive environment led by tutors from Penrith Symphony Orchestra, Penrith Conservatorium and the world-renowned Australian Chamber Orchestra.

Successful applicants are given the unique opportunity to participate in rehearsals and workshops each term and build towards performances, in which students play alongside professional musicians under the guidance of Penrith Symphony Orchestra's Artistic Director, Dr Paul Terracini. On occasion, the orchestra also performs in public concerts alongside Penrith Symphony Orchestra.



CREATIVE KIDS VOUCHER

Creative Kids Vouchers are accepted for all Penrith Conservatorium programs. Redeem your voucher by visiting or calling the Box Office on 02 4723 7600.

INSTRUMENTAL TUITION AND BAND/ORCHESTRA PROGRAM

If your school does not have a music program, we can help! Outsource your instrumental music program to Penrith Conservatorium.

We offer private and small group instrumental tuition, as well as a Band or Orchestra Program. Let us know if you would like the lessons to take place onsite at your school, or at our studios at The Joan, before, during or after school hours and we will take care of the rest!

SCHOLARSHIPS

Each year, we offer scholarships through a competitive application and live audition process. Our scholarships recognise future potential and give students the chance to take their hard work and talent to the next level.

MORE INFORMATION

penrithconservatorium.com.au

ENQUIRIES

E conservatorium@penrith.city

T 02 4723 7611



Suitable for Preschool – Year 12



Digital Offerings

Fire up your creativity and immerse yourself in the arts at home with Penrith Performing & Visual Arts. Head to our *Keep Heart Penrith* web page for a collection of exciting opportunities and fun things to see, do and listen to from Australia and around the world.

Broken down into easy to navigate categories including Kids and Families, Drama, Art, Comedy, Talks and Ideas, Dance, Film, Literature, Nature and Gardening and Puzzles and Games, there is something for all ages and tastes!

Plus, don't miss the Education section — a specially curated collection of education resources to help support students, parents, guardians and teachers with at-home learning.

Jam-packed full of resources, experiments, lessons, games and more, the links include syllabus-based materials from single and multi-disciplinary subject areas for Early Learning — Secondary Education.

New content is added weekly, so you can experience *Arts Anywhere Anytime*.

PP&VA

Photo by Christina Mishell



EVENTS AT PENRITH REGIONAL GALLERY



Learning at the Gallery



Term Workshops

BUBS CLUB

Suitable for Ages 0 – 2 and their Grownups

Foster a love of art in your little one as we playfully explore the gallery in a relaxed, social, baby and toddler friendly setting. Each week, free-play sensory activities will be followed by group time, where we will explore or create an artwork, play games and sing songs inspired by the gallery and garden.

DATES & TIMES

Wednesdays, 9:30am – 10:30am
(5-week program)

PRICE

\$5 per session



ART AND SEEK

Suitable for Ages 3 – 5 and their Grownups

Explore your little one's creative side and bond as you learn about art through play, stories, exhibition tours and making messy art together. Designed to stimulate your child's imagination as they increase their recognition of shapes, colours and textures, this program helps to develop fine motor skills, vocabulary and confidence.

DATES & TIMES

Tuesdays, 9:30am – 10:30am (5-week program)

PRICE

\$15 per session



CREATIVE KIDS VOUCHER

Creative Kids Vouchers are accepted for all Penrith Regional Gallery Term and School Holiday Workshops. Redeem your voucher by visiting or calling the Gallery on 02 4735 1100.



ART ADVENTURE

Suitable for Ages 5 – 8

Unleash your creativity as you paint, draw, print and sculpt away your Saturday mornings in our beautiful art studio. Build your art making skills across a variety of mediums and techniques and become inspired by some of the amazing artworks in the Gallery's Collection and exhibitions as you are guided to complete a fun and hands-on creative project each week. All skill levels welcome and new art projects are created each term.

DATES & TIMES

Saturdays, 10am – 11:30am (8-week program)

PRICE

\$190 per student, per term

ART ODYSSEY

Suitable for Ages 9 – 12

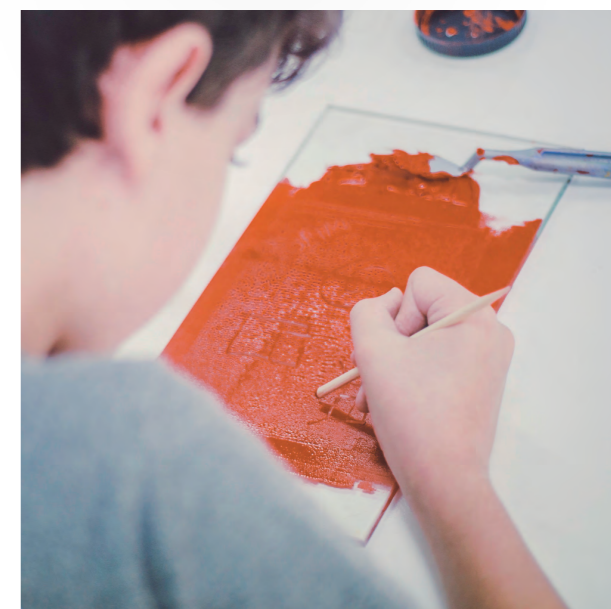
Immerse yourself in the world of art and explore a variety of materials including graphite, charcoal, pastel, acrylics, watercolours and clay. Students will be guided through a series of engaging 2D and 3D projects where they will develop art making skills and techniques. This will be complemented by visits to the gallery's current exhibitions where students will be exposed to a diverse range of artist and artworks through games and inquiry-led discussions.

DATES & TIMES

Wednesdays, 4pm – 5:30pm (8-week program)

PRICE

\$190 per student, per term



Suitable for Ages 0 – 16



School Holiday Workshops

Suitable for Ages 5 – 16

Join us in the School Holidays for a range of fun art making workshops inspired by exhibitions in the gallery and our artist-designed garden. With an ever-changing program of activities from observational drawing in the garden, to messy abstract painting, sculptural clay and stop-motion animation, there is something to suit all budding artists. All materials are supplied and all skill levels are welcome.

Stay Tuned –

More information and tickets available at penrithregionalgallery.com.au closer to the holiday periods.

School Visits

Experience Penrith Regional Gallery's annual program of exhibitions, collections, heritage architecture and gardens. Choose from a range of excursion options for Early Learning to Secondary Education to suit your groups learning outcomes and needs.

Please be aware that the Gallery may have reduced capacity due to COVID-19 Safety Restrictions at the time of your excursion. In the event COVID Safety protocols prevent school visits, virtual excursions options will be available.



Suitable for Preschool – Year 12



Visit An Exhibition

SELF-GUIDED EXHIBITION VISIT

Suitable for Years 5 – 12

Join our experienced Gallery staff or volunteers for a 15-minute exhibition introduction, followed by a self-guided tour.

PRICE

Free, bookings essential

GUIDED EXHIBITION TOUR

Suitable for Years 5 – 12

Enhance your students' excursion with a 60-minute tour and discussion of the current exhibition with activities in the Gallery or garden, led by Gallery staff.

PRICE

\$100 (Minimum 10 students)

GUIDED EXHIBITION TOUR AND ART MAKING IN THE STUDIO

Suitable for Years 5 – 12

Take your Guided Exhibition Tour, outlined above, to the next level by adding a 60-minute art making workshop in the studio afterwards.

PRICE

\$200 (Minimum 10 students)

Explore The Lewers Bequest

GARDEN SCULPTURES TOUR

Suitable for Preschool – Year 12

Discover our heritage site including the home and garden of Margo and Gerald Lewers and collection of outdoor sculptures, in a special 60-minute tour featuring activities run by our Gallery staff.

PRICE

\$100 (Minimum 10 students)

COLLECTION UP CLOSE

Suitable for Years 5 – 12

Come on an exclusive and informative 90-minute behind-the-scenes tour, viewing of selected Collection objects and an art appreciation program with our Gallery staff.

PRICE

\$200 (Minimum 10 students)

ARTIST-LED MASTERCLASS

Suitable for Years 11 – 12

Don't miss our intensive studio sessions for Senior Secondary Students, run throughout the year together with our program highlights. Each session is run by a practicing artist, with a connection to the local area and/or whose work is currently being exhibited at the Gallery.

PRICE

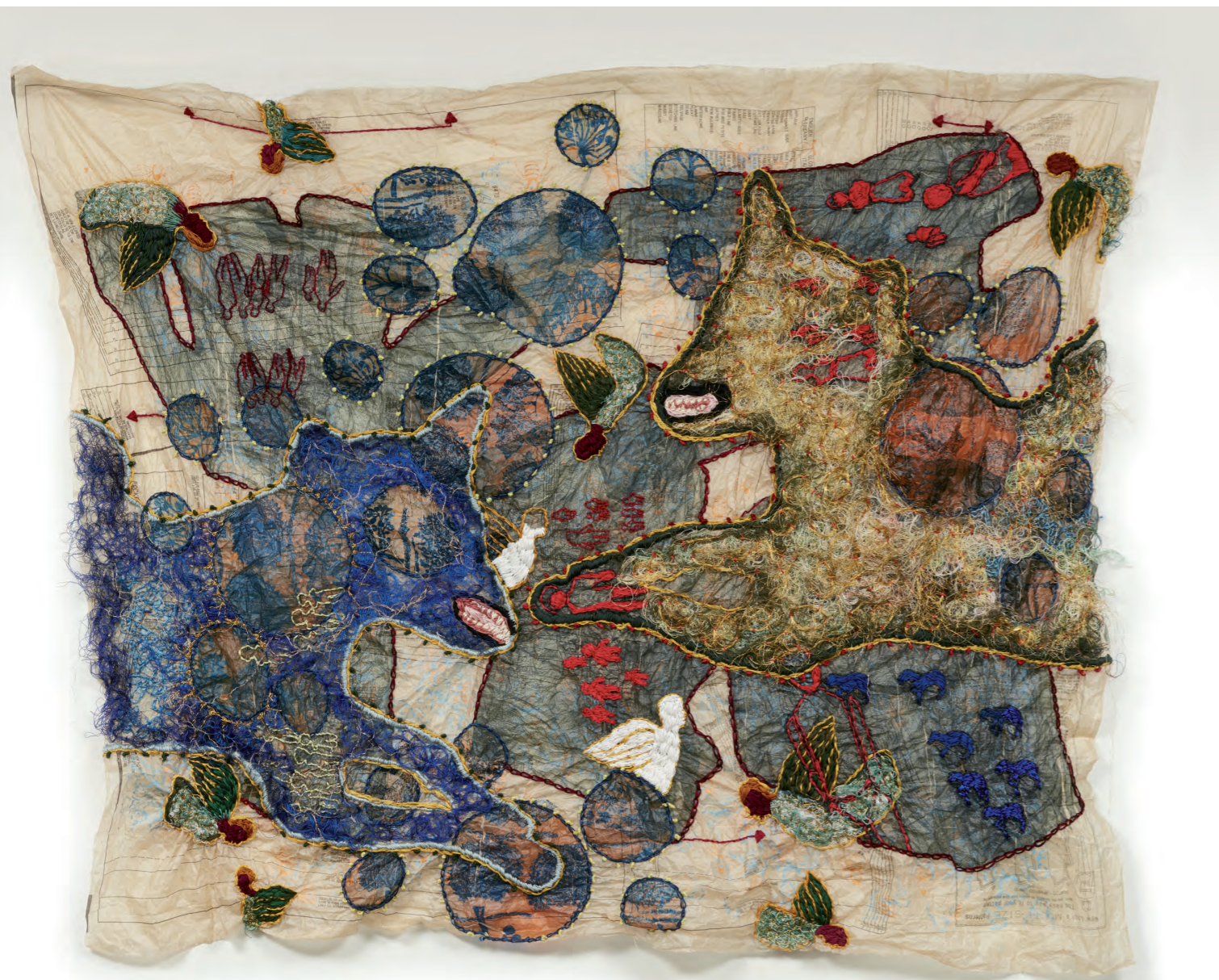
Please contact the Gallery for a quote

Exhibition Highlights

In 2022, we are excited to bring you a range of new exhibitions, in addition to our permanent collections, heritage garden and historic architecture to allow your students to explore creativity and art making in all its forms.

From painting, sculpture and photography to contemporary fashion, the exhibitions present traditional and new art materials and techniques created by artists and makers at different stages of their careers.

Please visit our website to find out more about our current and upcoming exhibitions and discover which best link to your students' learning outcomes. Where available, full Curriculum Links, Online Media Resources, Teachers Resource Kits and Study Guides can be found on the individual exhibition web pages at penrithregionalgallery.com.au/learning



Mehwish Iqbal, *Oscillation of Memorabilia*, 2018, Silk Screen, Etching, Collagraph, Embroidery. Courtesy the Artist



Suitable for Preschool – Year 12



A TANGLED BANK

LORRAINE CONNELLY-NORTHEY, MEHWISH IQBAL, JUMAADI, SHIVANJANI LAL, LÉULI ESHRĀGHI, SERA WATER AND SAIRI YOSHIZAWA

A Tangled Bank brings together the select works of seven contemporary artists from diverse backgrounds in an exclusive exhibition curated by Penrith Regional Gallery.

Drawing upon organic materials, often found, recycled or repurposed, and using a range of techniques, their portfolio of powerful works reflects environmental crises, histories of forced migration and the displacement and dispossession of First Nations land.

This timely exhibition reflects these disparate experiences and stories to portray the entanglement of our shared history across cultures and climate. Whilst emphasising the past strains we have experienced, it provides a glimmer of hope for us to work as one and heal.

A Tangled Bank will give your students the opportunity to analyse our past, present and future, whilst inspiring them to adapt innovative materials and techniques in their art practice.

Term 1

DATES

15 January – 17 April

PRICE

Free, bookings essential

LOCATION

Lewers House



The Designers' Guide: Easton Pearson Archive 2018
 Photo: Carl Warner, Illustration: Stephen Mok
 Donated by Dr Paul Eliadis AM through the Australian
 Government's Cultural Gifts Program 2017
 Easton Pearson Archive, Museum of Brisbane Collection

A touring exhibition organised by Museum of Brisbane (MoB),
 toured by Museums & Galleries Queensland.

This project has been assisted by the Australian Government's Visions of Australia program.

The Easton Pearson Archive gift to Museum of Brisbane has been made possible by the generous support of Dr Paul Eliadis AM, a Brisbane-based philanthropist and patron of contemporary art and design. The Archive consists of more than 3,300 garments donated by Dr Eliadis through the Australian Government's Cultural Gifts Program, 2017. It is supported by more than 5,000 accessories, specification sheets, range plans, look books, photographs and other supporting material donated by Pamela Easton and Lydia Pearson, 2018.

An exhibition by Museum of Brisbane (MoB)

PATTERN AND PRINT: EASTON PEARSON ARCHIVE

Join us for the award-winning exhibition, *Pattern and Print: Easton Pearson Archive* – a celebration of the internationally acclaimed Brisbane fashion house Easton Pearson.

Renowned as being amongst the cutting-edge in the fashion world between 1998 and 2016, this magnificent exhibition highlights the creative relationship and collaborative approach between Pamela Easton and Lydia Pearson, whose unique ways of working fostered inventive designs, lasting collaborations and supported ethical manufacture.

As well as creating its own textile designs, setting it apart from other Australian fashion houses, Easton Pearson also worked with individual artists to create unique designs which ranged from colourful Indian hand beading, bold digital prints of original artworks, or designs painted by hand directly onto a finished dress.

Featuring a specially curated selection of garments and fashion-related objects, *Pattern and Print: Easton Pearson Archive* showcases the daring design, technical innovations, bespoke fabrics and bold prints Easton Pearson became known for over its remarkable 28-year history.

The garments are complemented by a custom mural by Brisbane-based painter, illustrator and long-time Easton Pearson collaborator, Stephen Mok, who created window designs for the label's flagship store, hand painted patterns onto garments, and decorated accessories and props for the runway. His playful aesthetic presents the fantastical world of Easton Pearson, where both simplicity and detail shine, and artistry triumphs.

This exhibition provides a looking glass into the history of Australian fashion, the process of creating garments and evolving aesthetics. A must-see for textiles, fashion, art, design and technology and history students.

Term 1

DATES

22 January – 17 April

PRICE

Free, bookings essential

LOCATION

Main Gallery

PATTERN & PRINT
EASTON PEARSON ARCHIVE

PENRITH REGIONAL GALLERY
HOME OF THE LEWERS BEQUEST

MoB
MUSEUM OF BRISBANE

BRISBANE CITY

Project Partner

Australian Government
Visions of Australia

Touring Partner

museums & galleries
QUEENSLAND

Easton Pearson Archive
Education Partner

tate

Publication Sponsor

Endeavour
BRISBANE MARITIME FOUNDATION

Easton Pearson Archive
Dress Circle

EASTON PEARSON ARCHIVE
THE PRESS KIBBLE

SUNRISE, SUNSET

TODD McMILLAN AND SARAH MOSCA



Blue Mountains based artists Todd McMillan and Sarah Mosca come together in this captivating exhibition about sharing and re-telling stories.

Featuring newly commissioned works in the form of 16mm film, photography and installation, *Sunrise, Sunset* is McMillan and Mosca's response to writer and journalist, Italo Calvino's story, *Invisible Cities*.

Jam-packed full of whimsy, wonder and melancholy, the tale follows an ageing emperor seeking to learn of the cities in his vast kingdom. Told from the accounts of a travelling merchant, the text is a travelogue to places that do not exist.

Sunrise, Sunset evokes the idea that recollection is often hazy at the edges and shifts in the changing light. A fantastic opportunity for visual arts and photography students to analyse how to convey emotions and stories, whilst responding to texts through the use of multi-media.



Term 2–3

DATES

3 May – 15 August

PRICE

Free, bookings essential

LOCATION

Lewers House

Left: Todd McMillan, *Albatross* (film still), 2012, 16mm film loop, 15:40. Courtesy the artist and Sarah Cottier Gallery
Right: Sarah Mosca, *Fall*, 2021, pigment print on glass, steel, 160 x 75 cm. Courtesy the artist and Sarah Cottier Gallery

Permanent Displays



FROM THE COLLECTION

Immerse yourself in *From the Collection*, our ongoing series of displays and short-term residencies presented in the spirit of Margo Lewers and her wish that her home and collection of artworks be gifted to the people of Penrith, and Western Sydney.

This program invites artists, musicians, writers and members of the local community to engage with The Gallery's Collection in new and exciting ways, providing fresh perspectives on a cultural asset that continues to grow and inspire.

Presented in our historic Anchor House, this display provides key learning opportunities for students in Modern and Contemporary Australian Art, with particular importance for our local region.

From The Collection X Stephen Wickham, installation view, 2020, Anchor House, Penrith Regional Gallery. Courtesy the artist and Silversalt Photography



THE GARDEN

Penrith Regional Gallery is situated within an award-winning heritage garden, designed and planted by the original owners, Margo and Gerald Lewers. Unique in its design, the garden features a combination of native and introduced species, such as those from South East Asia.

Take time out during your excursion to discover and explore the wonders of the living work of art that is the garden. Featuring a number of outdoor sculptures by artists including Margo and Gerald Lewers, Margel Hinder and Lyndon Dadswell, this is an opportunity for your students to analyse works and how they sit harmoniously in a natural environment, up close and in-person.

Margel Hinder, *Six Day War I* (1967), Lynten Steel, 162 x 90 x 80cm. Gift of the Artist 1981, Penrith Regional Gallery, Home of The Lewers Bequest Collection. Copyright Courtesy of the Artists Estate



Suitable for Preschool – Year 12



Exhibition Programs

Join us throughout the year for a number of special events and opportunities!

IN CONVERSATION

Delve further into our current exhibition with a captivating discussion between the artist/s and curator/s, in the Gallery or the garden.

ARTIST LED WORKSHOPS

Don't miss your chance to learn and build on your art making skills in special workshops lead by exhibiting and local artists.

COMMUNITY DAY

Help us celebrate the opening on a new suite of exhibitions with a variety of free and paid programs run across the galleries and the garden. These include exhibition tours for Early Learning and Primary School students.

GALLERY NIGHTS

Over select Summer evenings, the galleries will remain open with a twist, such as live music, art making and special guest tours. A fantastic way for Secondary students and teachers to see art in a new light!

Stay Tuned –
More details announced on our website
closer to the dates.



Suitable for Preschool – Year 12



Digital Offerings

Embark on Penrith Regional Gallery's creative projects at home or in the classroom.

Download one of our worksheets or sign up for an online workshop and go on your own artistic journey.

Highlights include:

- *Art Walks*, a series produced by artists from the upcoming Gallery program which invites you transform and enrich your daily exercise through art making;
- Digital resources for Schools for all of our 2022 exhibitions in the Main Gallery;
- Creative guides with a focus on design elements such as colour, shape, pattern and line;
- Colouring-in and activity sheets;
- Step-by-step video guides; and
- Inspiration for making your own creative journal.

Our digital library is also full of interesting essays and videos for you to learn more about art in our region and the Gallery's rich history.

Suitable for all ages and stages, these offerings aim to stimulate curiosity, promote mindfulness and develop art making skills.



PLANNING YOUR EXCURSION



Information for School Groups



THE JOAN

ARRIVAL TIMES

We strongly recommend that your group arrives at least 30 minutes prior to the start time of the event. We advise that you check the event web page to see if there is a lock out period before attending the theatre. Latecomers will be admitted in a suitable break during the event, if possible. If you are running late, please call Box Office on 02 4723 7600.

CHECK-IN, TICKETS AND SEATING

Seating for school performances is General Admission. Please have your group remain outside of our venue, while a teacher checks in at Box Office upon your arrival. Our Front of House staff will come and collect your group and escort you to your seats. If you have any specific access requirements for seating, please ensure you indicate this on your booking form.

If you are attending a general public performance, tickets will be sent to the organising teacher via email.

SCHOOL BAGS

The Joan encourages students to leave school bags at home or school as secure storage is not available. In the event your students bring their bags, please check each student tucks their bag away safely underneath the seat they are allocated in the theatre.

RISK ASSESSMENT

The Risk Assessment for The Joan is available to download from thejoan.com.au/education

DURATION

Performance duration may vary due to the nature of live theatre. Please check the show pages on our website for the most up-to-date run time. We recommend you allow additional time at the end of the performance for transport back to school. An email including an updated duration will be sent out to teachers prior to the event.



For Events at The Joan

W thejoan.com.au/education

E boxoffice@penrith.city

(Please copy in creativelearning@penrith.city)

P 02 4723 7600



The Joan and Penrith Regional Gallery are COVID Safe venues. Please check our websites or contact us to check on the latest information and protocols prior to your visit.

HANDY GUIDE TO ATTENDING THE THEATRE

Attending the theatre is a magical and exciting experience for all ages. For some of your students, an excursion to The Joan may be their first time seeing live theatre. To ensure you have a positive and memorable time, we have put together a 'Handy Guide' of tips to discuss with your students prior to attending a show.

- Mobile phones and electronic devices should be turned off and put away before the show commences;
- Photography and recording of all kinds are strictly prohibited, unless otherwise specified;
- If you are allowed to consume snacks and drinks during the performance, please be respectful to the performers and other audience members by eating/drinking as quietly as possible and disposing all food wrappers in the bins when you exit the theatre at the end of the performance;
- Allow the performers to lead the way in how you are to interact with the performance. Laughing and clapping when appropriate is encouraged;
- Talking loudly or during inappropriate moments, blocking someone else's view, whistling or screaming during or at the end of a show may disturb other patrons and is discouraged.

A full version of 'A Handy Guide to Attending the Theatre' is available to download as a PDF or Word version from thejoan.com.au/education and each show's web page.

PENRITH REGIONAL GALLERY

ARRIVAL TIMES

If you are running late for a workshop or tour, please call the Gallery on 02 4735 1100.

CHECK-IN AND TICKETS

Please have your group remain outside, while a teacher checks in at Reception, upon your arrival. Our friendly staff at Reception will be able to assist in directing you to the relevant Gallery or Workshop space on site.

Tickets will be provided for ticketed exhibitions, depending on COVID Safety restrictions.

SCHOOL BAGS

We recommend that students leave their backpacks at home or school for safe-keeping, as there is limited secure storage available on site.

RISK ASSESSMENT

The Risk Assessment for Penrith Regional Gallery is available to download from penrithregionalgallery.com.au/learning

For Events at Penrith Regional Gallery
W penrithregionalgallery.com.au/learning
E gallery@penrith.city
P 02 4735 1100

HANDY GUIDE TO ATTENDING THE GALLERY

Attending the Gallery is a remarkable and mesmerising experience for all ages. For some of your students, an excursion to Penrith Regional Gallery may be their first time seeing an art exhibition. To ensure you have a positive and memorable time, we have put together a 'Handy Guide' of tips to discuss with your students prior to attending a show.

- Please keep your hands away from the artworks, so we can ensure their preservation for others to appreciate for years to come;
- Lead pencils are the only drawing implements accepted inside the gallery spaces;
- We encourage you to discuss the works with your teacher and fellow students. Please consider other members of the public are there to see the artworks too and keep your voices at an appropriate level;
- Flash photography inside the gallery spaces is strictly prohibited, unless otherwise stipulated;
- Food and drinks cannot be consumed in the gallery spaces under any circumstances. Please eat/drink your snacks in our garden or café areas; and
- Our heritage garden is an artwork too! Take time to enjoy what it has to offer, but stay out of the garden beds and off the trees.

A full version of 'A Handy Guide to Attending the Gallery' is available to download as a PDF or Word version from penrithregionalgallery.com.au/learning and each exhibition's web page.

How To Book **BOOK YOUR EXCURSION TO PP&VA IN JUST 2 EASY STEPS!**



STEP 1 COMPLETE AND SUBMIT THE BOOKING FORM TO US

All bookings for school groups require a completed booking form. This includes paid and free events.

ONLINE (PREFERRED)

You can complete our online Schools Booking Form for:

Events at The Joan

1. On the Education page of our website, thejoan.com.au/education (Please note, the form is also included on each individual show web page); or
2. Contact creativelearning@penrith.city if you would like us to email the online form to you for completion.

Events at Penrith Regional Gallery

1. On the Learning page of our website, penrithregionalgallery.com.au/learning; or
2. Contact gallery@penrith.city if you would like us to email the online form to you for completion.

Alternatively, you can fill out and submit the appropriate booking form at the back of this brochure and return it via one of the following options:

METHOD	EVENTS AT THE JOAN	EVENTS AT THE GALLERY
SCAN AND EMAIL	To our Box Office Manager at boxoffice@penrith.city (Please copy in creativelearning@penrith.city)	To our staff at gallery@penrith.city
POST IT	To Joan Sutherland Performing Arts Centre, ATTN: Box Office, PO Box 2, Penrith, NSW, 2751	To Penrith Regional Gallery, Home of The Lewers Bequest, ATTN: Learning, PO Box 2, Penrith, NSW, 2751
DROP IT OFF IN PERSON	To The Joan's Box Office 597 High Street, Penrith	To the Gallery's Reception 86 River Road, Emu Plains

STEP 2
BOOKING CONFIRMATION AND PAYMENT

We will do our best to accommodate your first preference for event dates and times, but cannot guarantee availability. Bookings are processed in the order in which they are received.

EVENTS AT THE JOAN

After we receive your completed booking form, we will email your Admin/Accounts team with an invoice for 50% of the total value of your booking. We require the deposit to be paid 30 days from the date of the deposit invoice and final payment, with correct attendance numbers, at least two weeks prior to the performance date.

In the event the booking is made within 30 days of the performance date, payment must be made in full at least two weeks prior.

Changes to numbers must be submitted in writing to boxoffice@penrith.city and payment for additional tickets is due immediately.

Please check your invoice carefully upon receiving it as this is confirmation of your booking date and time.

If we do not receive payment by the due date on your invoice, your tickets may not be held. If you are having difficulty organising payment, please contact us immediately on 02 4723 7600.

PRIOR TO YOUR EXCURSION

To ensure you have a hassle-free excursion, we will send an email to the teacher or teachers listed on your booking form prior to your visit, detailing important information about your visit, which may include changes to running times and audience information. Where possible, we will also include Curriculum Links, Teachers and Online Media Resources.

If you have any queries, please do not hesitate to contact us:

THE JOAN

E boxoffice@penrith.city
(Please copy in creativelearning@penrith.city)
P 02 4723 7600

EVENTS AT PENRITH REGIONAL GALLERY

Bookings for all school visits require four weeks' notice. Following the submission of your Schools Booking Form, our Learning Coordinator will contact you via phone to discuss the details of your booking.

An email confirmation will be sent outlining these details and information about your excursion, within seven working days from the Learning Coordinator contacting you. If you are booking a paid program, an invoice will be included in this email.

Changes can be made up until seven days prior to your booking. Any changes to numbers, dates or times must be communicated in writing to gallery@penrith.city

If we do not receive payment by the due date on your invoice, your booking may not be held. If you are having difficulty organising payment, please contact us immediately on 02 4735 1100.

If you wish to cancel your booking, seven working days' notice is required, otherwise the cost of your excursion will be charged in full.

PENRITH REGIONAL GALLERY

E gallery@penrith.city
P 02 4735 1100

SCHOOL CONTACT DETAILS

SCHOOL NAME		
POSTAL ADDRESS		POSTCODE
STREET ADDRESS		
SUBURB	STATE	POSTCODE
SCHOOL PHONE		SCHOOL FAX

TEACHER'S DETAILS These will be used to send all essential communications.

TITLE	FIRST NAME	SURNAME
POSITION		
WORK PHONE		MOBILE PHONE
EMAIL		

ADDITIONAL TEACHER'S DETAILS If another teacher is attending on the day, please provide their details so we can communicate essential and up to date information to them prior to the event. If not, please leave this section blank.

TITLE	FIRST NAME	SURNAME
POSITION		
WORK PHONE		MOBILE PHONE
EMAIL		

ADMIN/ACCOUNTS TEAM'S DETAILS These will be used for invoice management purposes.

TITLE	FIRST NAME	SURNAME
MOBILE PHONE		EMAIL

YEAR GROUP/S OF STUDENTS ATTENDING

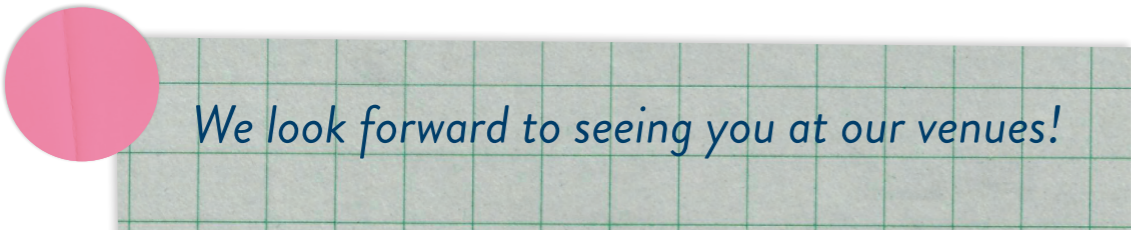
THIS SCHOOL IS A (PLEASE SELECT ONE):

- ☐ DEPARTMENT OF EDUCATION SCHOOL
- ☐ CATHOLIC SYSTEMIC SCHOOL
- ☐ INDEPENDENT SCHOOL
- ☐ SPECIFIC NEEDS SCHOOL
- ☐ HOME SCHOOL
- ☐ PRESCHOOL
- ☐ OTHER

TERMS & CONDITIONS

After we receive your completed booking form, we will email your Admin/Accounts team with an invoice for 50% of the total value of your booking. We require the deposit to be paid 30 days from the date of the deposit invoice and final payment, with correct attendance numbers, at least 2 weeks prior to the performance date. In the event the booking is made within 30 days of the performance date, payment must be made in full at least 2 weeks prior. Changes to numbers must be submitted in writing to boxoffice@penrith.city and payment for additional tickets is due immediately. We advise you check your invoice carefully upon receiving it as this is confirmation of your booking date and time. We will do our best to accommodate your first preference for performance dates and times, but cannot guarantee availability. Bookings are processed in the order in which they are received.

☐ I UNDERSTAND THE TERMS & CONDITIONS



EVENT DETAILS

Indicate performance, preferred date and time, the number of students and teachers attending and any access requirements your group has. **Please Note:** The Joan offers 1 free teacher’s ticket for every 10 students (unless otherwise specified on the event page). Additional teachers will be charged at the student price.

PERFORMANCE / EVENT NAME

DATE (FIRST PREFERENCE)

TIME (FIRST PREFERENCE)

DATE (SECOND PREFERENCE)

TIME (SECOND PREFERENCE)

NUMBER OF STUDENTS ATTENDING

NUMBER OF TEACHERS ATTENDING

PLEASE INDICATE IF WE CAN ASSIST WITH ACCESS DURING YOUR VISIT
At The Joan, we are dedicated to creating inclusive arts experiences. The more details you are able to provide us, the better prepared our staff will be. Examples of access requirements we offer include wheelchair access, aisle seating and companion seating. If there are any additional requirements you have for your group, please let us know and we will do our best to accommodate your request.

PLEASE CALL ME TO DISCUSS THESE ACCESS REQUIREMENTS IN FURTHER DETAIL

YES

NO

DO YOU CONSENT TO THE JOAN DOCUMENTING YOUR VISIT FOR ARCHIVAL PURPOSES AND USE ON OUR WEBSITE AND SOCIAL MEDIA PLATFORMS?

YES

NO

IF YOU WOULD LIKE TO BOOK A SECOND PERFORMANCE/EVENT, PLEASE INDICATE BELOW.

PERFORMANCE / EVENT NAME

DATE (FIRST PREFERENCE)

TIME (FIRST PREFERENCE)

DATE (SECOND PREFERENCE)

TIME (SECOND PREFERENCE)

NUMBER OF STUDENTS ATTENDING

NUMBER OF TEACHERS ATTENDING

PLEASE INDICATE IF WE CAN ASSIST WITH ACCESS DURING YOUR VISIT

PLEASE CALL ME TO DISCUSS THESE ACCESS REQUIREMENTS IN FURTHER DETAIL

YES

NO

DO YOU CONSENT TO THE JOAN DOCUMENTING YOUR VISIT FOR ARCHIVAL PURPOSES AND USE ON OUR WEBSITE AND SOCIAL MEDIA PLATFORMS?

YES

NO

HELP US REACH YOU

We would like to find out the best way to communicate with you in the future. How did you find out about this performance/event?

- ☐ THE JOAN'S WEBSITE
- ☐ PP&VA'S 2022 ARTS EDUCATION BROCHURE (PHYSICAL COPY)
- ☐ PP&VA'S 2022 ARTS EDUCATION BROCHURE (DIGITAL VERSION)
- ☐ FACEBOOK
- ☐ INSTAGRAM
- ☐ WORD OF MOUTH
- ☐ OTHER

ADDITIONAL COMMENTS

Please let us know of any other comments or information you have regarding your booking.

AGREEMENT

☐ I CONFIRM THAT THE INFORMATION PROVIDED ON THIS FORM IS TRUE AND CORRECT

FULL NAME

SIGNATURE

DATE

INFORMATION & ENQUIRIES

Please contact Ian Zammit, Theatre Programs Coordinator
E creativelearning@penrith.city | T 02 4723 7606

RETURN THIS FORM

SCAN AND EMAIL to our Box Office Manager at boxoffice@penrith.city
(Please copy in creativelearning@penrith.city)
POST IT to Joan Sutherland Performing Arts Centre,
ATTN: Box Office, PO Box 2, Penrith, NSW, 2751
DROP IT OFF IN PERSON to The Joan’s Box Office – 597 High Street, Penrith

SCHOOL CONTACT DETAILS

SCHOOL NAME

POSTAL ADDRESS

POSTCODE

STREET ADDRESS

SUBURB

STATE

POSTCODE

SCHOOL PHONE

SCHOOL FAX

TEACHER'S DETAILS These will be used to send all essential communications.

TITLE

FIRST NAME

SURNAME

POSITION

WORK PHONE

MOBILE PHONE

EMAIL

ADDITIONAL TEACHER'S DETAILS If another teacher is attending on the day, please provide their details so we can communicate essential and up to date information to them prior to the event. If not, please leave this section blank.

TITLE

FIRST NAME

SURNAME

POSITION

WORK PHONE

MOBILE PHONE

EMAIL

ADMIN/ACCOUNTS TEAM'S DETAILS These will be used for invoice management purposes.

TITLE

FIRST NAME

SURNAME

MOBILE PHONE

EMAIL

So we can try and better cater for your group please indicate the:

YEAR GROUP/S OF STUDENTS ATTENDING

REASON/S FOR VISITING PENRITH REGIONAL GALLERY

RELEVANT FOCUS OR CONTENT AREAS STUDENTS ARE STUDYING

THIS SCHOOL IS A (PLEASE SELECT ONE):

- ☐ DEPARTMENT OF EDUCATION SCHOOL
- ☐ CATHOLIC SYSTEMIC SCHOOL
- ☐ INDEPENDENT SCHOOL
- ☐ SPECIFIC NEEDS SCHOOL
- ☐ HOME SCHOOL
- ☐ PRESCHOOL
- ☐ OTHER

TERMS & CONDITIONS

Bookings for all school visits require four weeks’ notice. You will receive an invoice from the Gallery once your booking has been confirmed. Any changes to numbers, times or dates must be communicated in writing to gallery@penrith.city. Changes can be made up until seven days prior to your booking. Cancellation Policy: Seven working days’ notice must be provided, otherwise the cost of your visit will be charged in full.

☐ I UNDERSTAND THE TERMS & CONDITIONS



EVENT DETAILS

PLEASE SELECT THE EXCURSION TYPE/S:

- ☐ SELF-GUIDED EXHIBITION VISIT
- ☐ GUIDED EXHIBITION TOUR
- ☐ GUIDED EXHIBITION TOUR AND ARTMAKING
- ☐ IN THE STUDIO
- ☐ GARDEN SCULPTURES TOUR
- ☐ COLLECTION UP CLOSE
- ☐ ARTIST MASTERCLASS

EXHIBITION / EVENT NAME

DATE (FIRST PREFERENCE)	TIME (FIRST PREFERENCE)
DATE (SECOND PREFERENCE)	TIME (SECOND PREFERENCE)
NUMBER OF STUDENTS ATTENDING	NUMBER OF TEACHERS ATTENDING (INCLUDING EXTRA SUPPORT STAFF AND PARENTS)

PLEASE INDICATE IF WE CAN ASSIST WITH ACCESS DURING YOUR VISIT
At Penrith Regional Gallery, we are dedicated to creating inclusive arts experiences. Please indicate if we can assist with access during your visit. The more details you are able to provide us, the better prepared our staff will be. Examples of access requirements we offer include wheelchair access, hearing assistance via a hearing loop and Auslan Interpretation. If there are any additional requirements you have for your group, please let us know and we will do our best to accommodate your request.

PLEASE CALL ME TO DISCUSS THESE ACCESS REQUIREMENTS IN FURTHER DETAIL	YES <input type="checkbox"/>	NO <input type="checkbox"/>
DO YOU CONSENT TO THE GALLERY DOCUMENTING YOUR VISIT FOR ARCHIVAL PURPOSES AND USE ON OUR WEBSITE AND SOCIAL MEDIA PLATFORMS?	YES <input type="checkbox"/>	NO <input type="checkbox"/>

HELP US REACH YOU

We would like to find out the best way to communicate with you in the future. How did you find out about this exhibition/event?

- ☐ PENRITH REGIONAL GALLERY'S WEBSITE
- ☐ PP&VA'S 2022 ARTS EDUCATION BROCHURE (PHYSICAL COPY)
- ☐ PP&VA'S 2022 ARTS EDUCATION BROCHURE (DIGITAL VERSION)
- ☐ FACEBOOK
- ☐ INSTAGRAM
- ☐ WORD OF MOUTH
- ☐ OTHER

HAVE YOU PARTICIPATED IN PENRITH REGIONAL GALLERY'S LEARNING PROGRAMS IN THE PAST?

YES ☐ NO ☐

AGREEMENT ☐ I CONFIRM THAT THE INFORMATION PROVIDED ON THIS FORM IS TRUE AND CORRECT

FULL NAME	SIGNATURE	DATE
-----------	-----------	------

INFORMATION & ENQUIRIES

Please contact Learning at the Gallery
E gallery@penrith.city | T 02 4735 1100

RETURN THIS FORM

SCAN AND EMAIL to our staff at gallery@penrith.city
POST IT to Penrith Regional Gallery, Home of The Lewers Bequest,
ATTN: Learning, PO Box 2, Penrith, NSW, 2751
DROP IT OFF IN PERSON to the Gallery's Reception
86 River Road, Emu Plains

PHOTOS

Front Cover
Photos by Heidrun Löhr and Phyllis Wong

Pages 5, 13, 39, 51 and 53
Photos by Phyllis Wong

Page 35 - Top Right-Hand Corner
The Designers' Guide: Easton Pearson Archive
(Installation detail) 2018
Photo: Carl Warner, Illustration: Stephen Mok
Donated by Dr Paul Eliadis AM through the Australian
Government's Cultural Gifts Program 2017
Easton Pearson Archive, Museum of Brisbane Collection

Details in this brochure are correct at the time of printing.
We reserve the right to alter without notice program, performers,
dates, times and/or prices as may become necessary.

PENRITH PERFORMING & VISUAL ARTS LTD

ABN 97 003 605 089

Joan Sutherland Performing Arts Centre

597 High Street, Penrith, NSW, 2750

PO Box 2, Penrith, NSW, 2751

thejoan.com.au/education

Box Office 02 4723 7600



JoanSutherlandPerformingArtsCentre



@_the_joan



@the_joan

Penrith Regional Gallery,

Home Of The Lewers Bequest

86 River Road, Emu Plains, NSW, 2750

PO Box 2, Penrith, NSW, 2751

penrithregionalgallery.com.au/learning

Administration 02 4735 1100



penrithregionalgallery



@prgtlb



@penrithregionalgallery

PP&VA

the Joan

theatre

penrith Con

PENRITH
REGIONAL
GALLERY
HOME OF THE LEWERS BEQUEST

GOVERNMENT PARTNERS

PENRITH
CITY COUNCIL



SPONSOR

CELESTINO