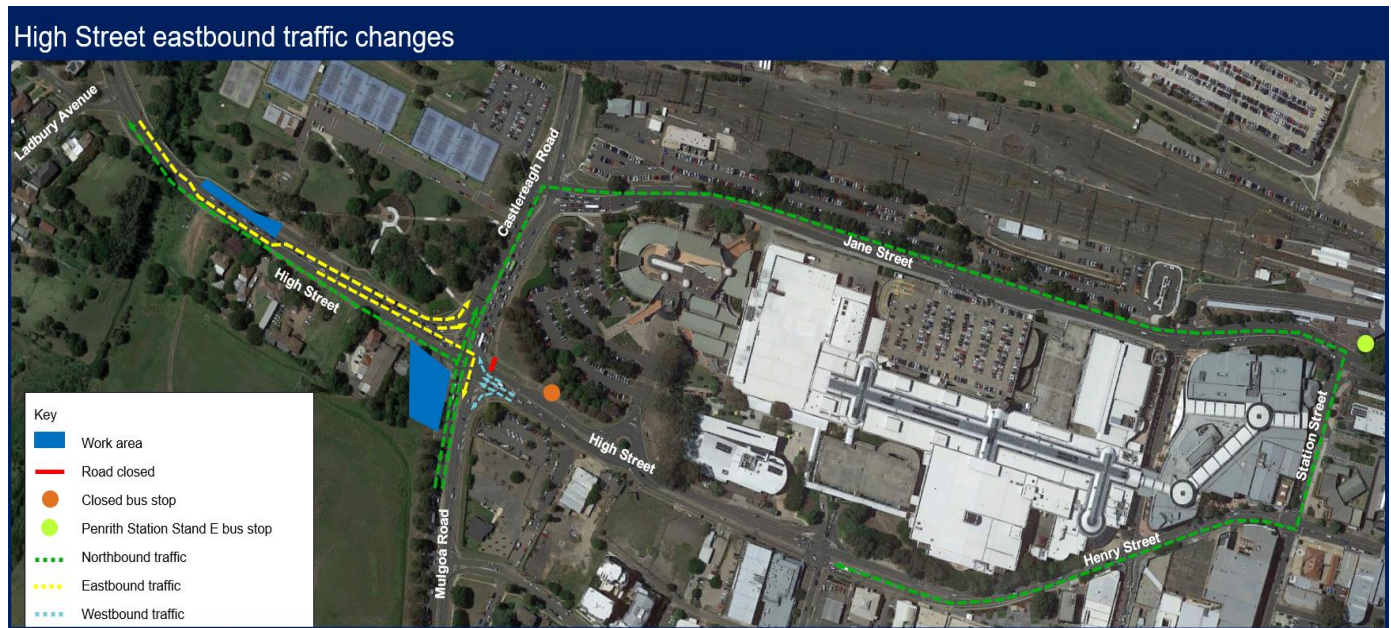




Traffic changes on High Street eastbound and Mulgoa Road, Penrith from Friday 11 September 2020

The Australian and NSW governments are jointly funding the upgrade of Mulgoa Road, Penrith from Union Road to Museum Drive.

Work is continuing on this project to improve the traffic flow along the Mulgoa Road and Castlereagh Road corridor, including the High Street and Jane Street intersections.



High Street eastbound detour

To carry out some key road pavement work on High Street and Mulgoa Road, a contraflow will be in place from **7pm Friday 11 September to 5am Monday 14 September 2020**, weather permitting.

High Street will be reduced to one lane in each direction between Mulgoa Road and Ladbury Avenue. Eastbound access to High Street will be closed for the duration of this work. A detour will be in place via Castlereagh Road, Jane Street, Station Street and Henry Street. Westbound traffic on High Street from the Penrith CBD will remain in place. Drivers should allow for delays of up to 10 minutes.

Mulgoa Road will be reduced to two lanes northbound on approach to the High Street intersection. Drivers should allow for delays of up to 10 minutes.

High Street westbound approaching Mulgoa Road will also have a single through lane closed, with minor impact to travel time.

Access to Emu Plains and the Penrith CBD will be maintained during this work.

High Street bus stop closure

Bus stop ID 2750398, located on High Street at Castlereagh Road, will be temporarily closed from **7pm Friday 11 September to 5am Monday 14 September**. For bus services 688, 689, 690P and 691, please use bus stop ID 275079 located at Penrith Station Stand E.



Australian Government

BUILDING OUR FUTURE



How will the work affect you?

- There will be temporary traffic lane closures on Mulgoa Road, Castlereagh Road, High Street and Jane Street from **Monday** to **Sunday** between **6pm** and **7am**.
- Pedestrian and cyclist detours are in place on Mulgoa Road, Castlereagh Road, High Street and Jane Street for their safety.

At times our work may be noisy. We will minimise impacts by aiming to complete noisier tasks by **11pm** and staging work in different locations.

Traffic changes

During lane closures there will be traffic control and a reduced speed limit of 40 km/hr for the safety of workers, motorists, cyclists and pedestrians. For your safety please follow traffic signs.

Please follow direction of traffic controllers, speed and detour signs. All traffic changes will be temporary during our standard work hours. For the latest traffic updates call 132 701, or visit livetraffic.com.au

Contact

If you have any questions, please contact our delivery partner McConnell Dowell on 1800 951 118 or email mulgoaroad.penrith@mcdgroup.com.

For more information on our projects visit rms.nsw.gov.au/projects/sydney-west/index.html



If you need help understanding this information, please contact the Translating and Interpreting Service on 131 450 and ask them to call us on 1800 951 118.